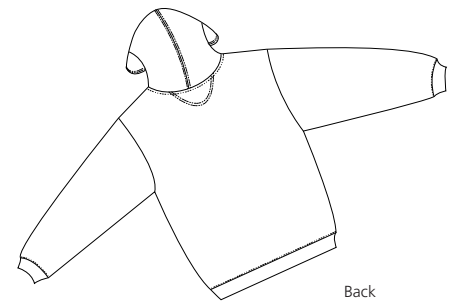
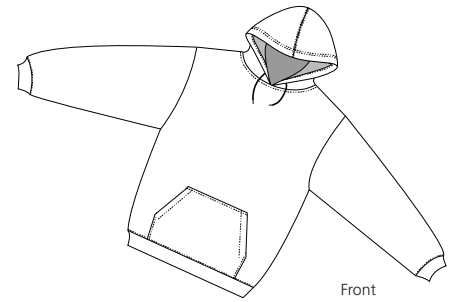


Pullover Hooded Sweatshirt

Sport-Tek
By Port Authority®



F254

- * 9-ounce * 60/40 ring spun combed cotton/poly * Fully coverseamed
- * Rib knit cuffs and waistband * Set-in sleeves * Locker patch
- * Matching drawcord * Side pockets

Care Instructions:

Machine wash cold with like colors.
Do not bleach. Tumble dry low.
Warm iron if necessary.

Finished Measurements in Inches

Size	XS	S	M	L	XL	2XL	3XL	4XL
Width	19	21	23	25	27	29	31	33
Length	27.5	28.5	29.5	30.5	31.5	32.5	33.5	34.5
Sleeve CB	33	35	36	37	38	39	40	41
Neck	10	10.25	10.5	10.75	11	11.5	11.75	12
Pocket	14x7.5	14x7.5	16x8.5	16x8.5	17x9.5	17x9.5	17x9.5	17x9.5

Width measured 1" under armhole. Length measured from high point shoulder seam to bottom hem. Sleeve measured from center back neck seam to hem. Neck width measured from seam to seam. Pocket measured HxW.

Colors

	Athletic Heather
	Black
	Dark Green
	Navy
	Red
	Royal

Please Note:

Colors shown are approximate and for reference only. For closest match see PMS colors, or for exact match, returnable samples and grommeted samples are available.

Color Chart

Colors	Athletic Heather	Black	Dark Green	Navy	Red	Royal
Textile PMS	No Match	19-4203TC	19-5320TC	19-4010TC	19-1764TC	19-3864TC
General PMS	No Match	Process Black	5535C	532C	187C	661C